

# CAPITOL VIEW ★★★ NASHVILLE



500 11TH AVENUE NORTH | NASHVILLE, TN 37203

OFFICE  
500 11th Ave N



## PROJECT OVERVIEW

**32 ACRES**

MIXED-USE DEVELOPMENT

**1,100,000**

SQ. FT. OF CLASS A OFFICE SPACE  
INCLUDING LIFEWAY, HEALTHSTREAM,  
AND HCA SUBSIDIARIES HEALTHTRUST,  
PARALLON AND SARAH CANNON

**130,000**

SQ. FT. OF RETAIL & RESTAURANT SPACE

**600**

UPSCALE MULTI-FAMILY APARTMENTS

**169**

HOTEL ROOMS  
OPENING SPRING 2020

**2.5 ACRES**

URBAN ACTIVITY PARK CONNECTED TO  
THE NASHVILLE GREENWAY SYSTEM

**CAPITOL VIEW OFFICE SPACE AVAILABLE FOR LEASE**



**A DIFFERENT VIEW OF**

★★★

COMMUNITY | BUSINESS | LIFESTYLE | NASHVILLE

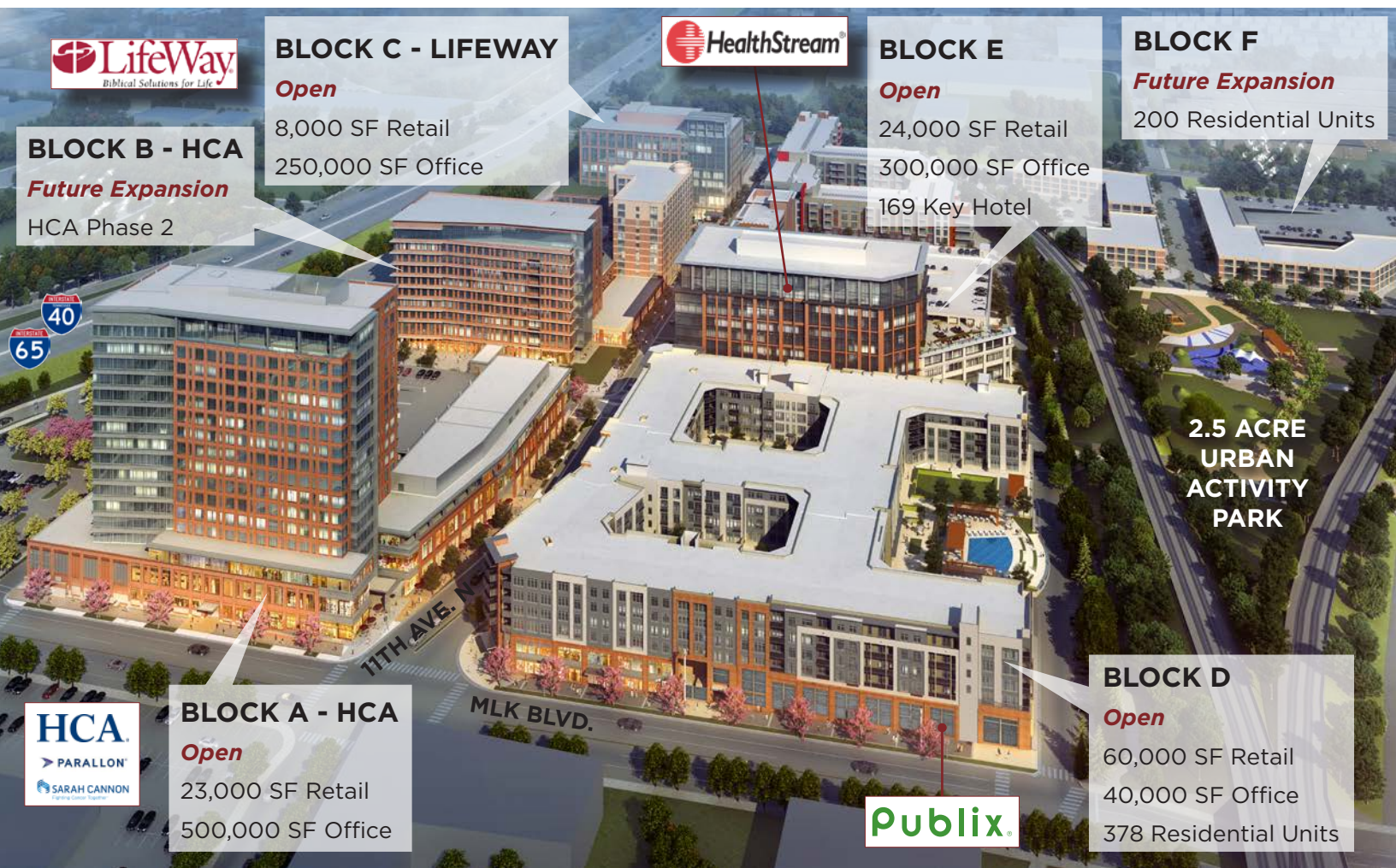
**YOU'LL SEE**

# PROJECT OVERVIEW

- ★ Capitol View is an authentic, mixed-use urban district located in the heart of Nashville that will house more than 1,100,000 square feet of Class A office space, 130,000 square feet of retail and restaurant space, 600 multifamily residential units, 169 hotel rooms and a 2.5-acre Urban Activity Park connected to Nashville’s greenway system.

## WHY CAPITOL VIEW?

- Attractive and strategic to new hires.
- Increase retention and productivity of current workforce.
- Easy access from I-40/I-65 to abundant and secured parking.
- Large, efficient floor plates.
- Modern, efficient LEED-certified buildings.
- Join committed partners - HealthStream, HCA Healthcare, and LifeWay.





# BUILDING OVERVIEW

- ★ The 'Block E' multi-tenant office building is located at the southwest corner of 11th Avenue North and Nelson Merry Street. This modern, efficient, LEED-certified building is flush with amenities and attractive to new hires. The authentic, upscale, mixed-use urban community will increase retention and productivity of current workforce.



1,200 SPACE  
 CONNECTED  
 PARKING GARAGE



GROUND FLOOR  
 RESTAURANTS AND  
 SPECIALTY RETAIL



HAMPTON INN &  
 SUITES HOTEL  
 NEXT DOOR



LOCKER ROOM AND  
 SHOWER FACILITIES  
 IN BUILDING



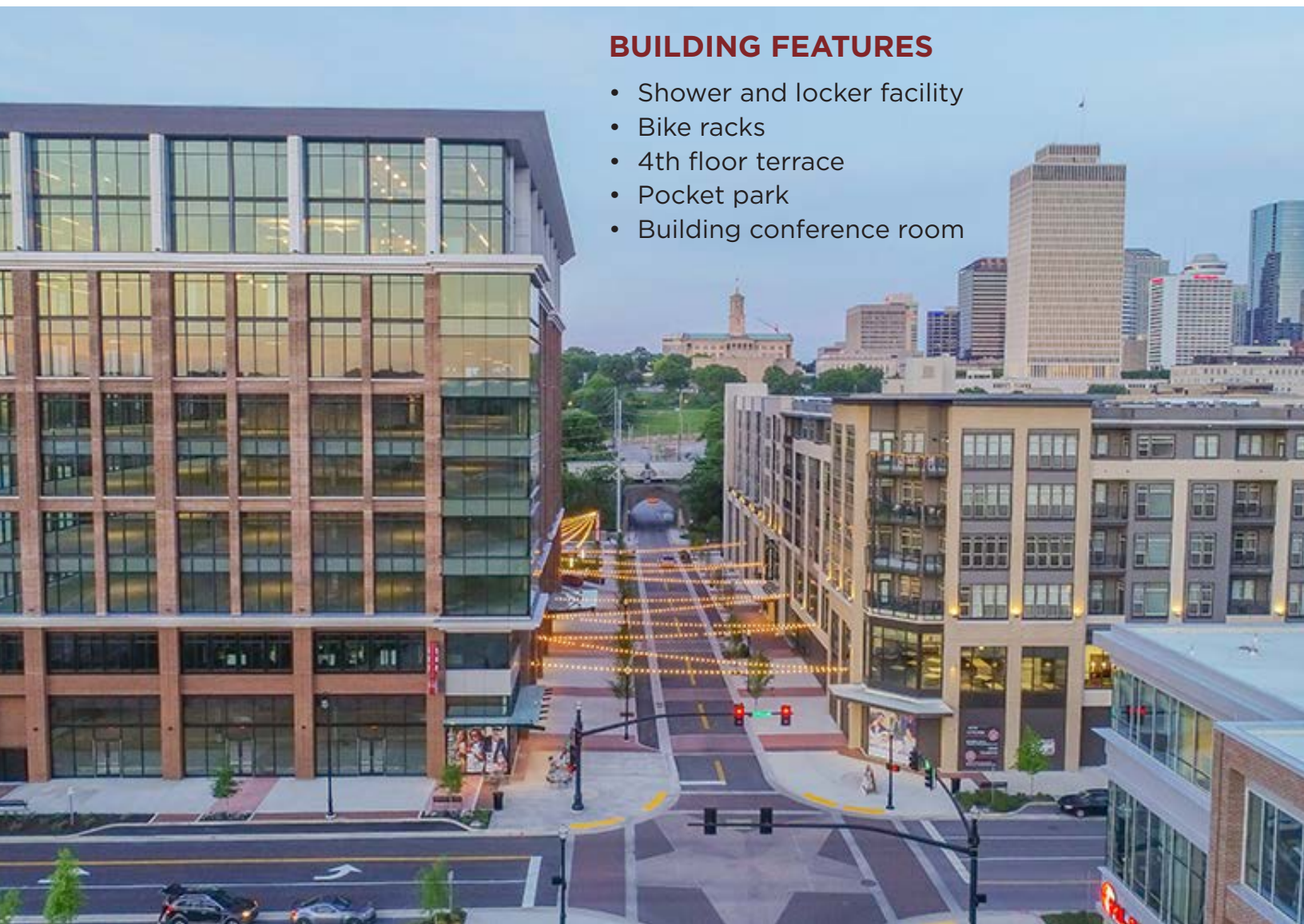
2.5 ACRE  
 URBAN ACTIVITY  
 PARK



TRAIL HEAD FOR  
 THE NASHVILLE  
 GREENWAY TRAIL

## BUILDING FEATURES

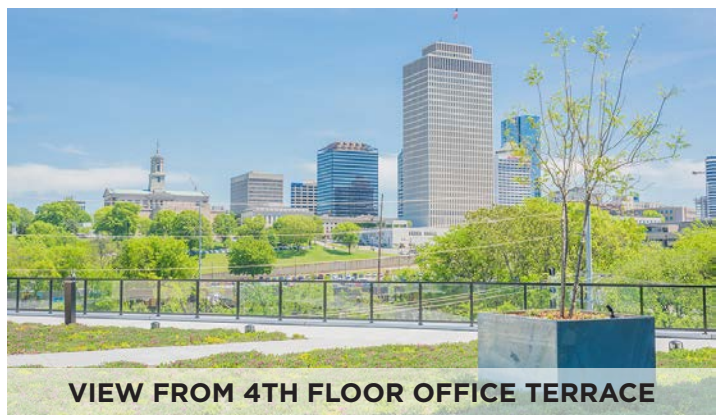
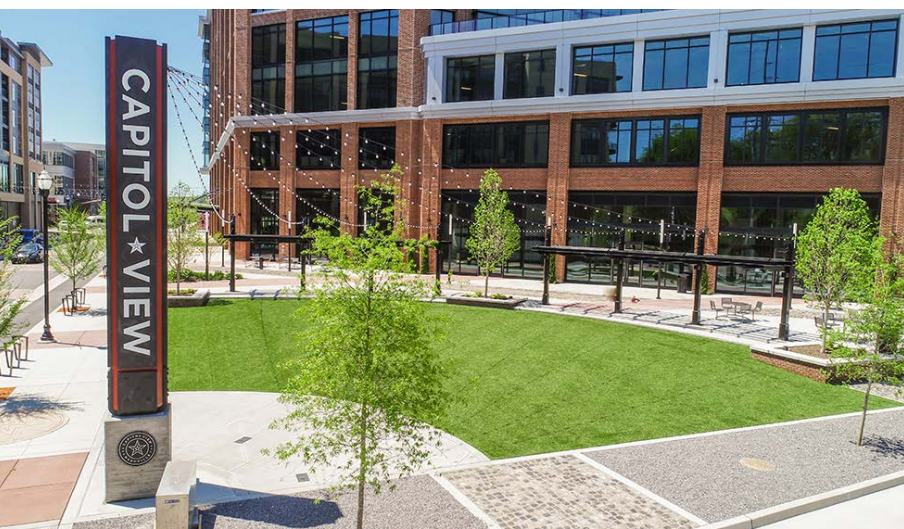
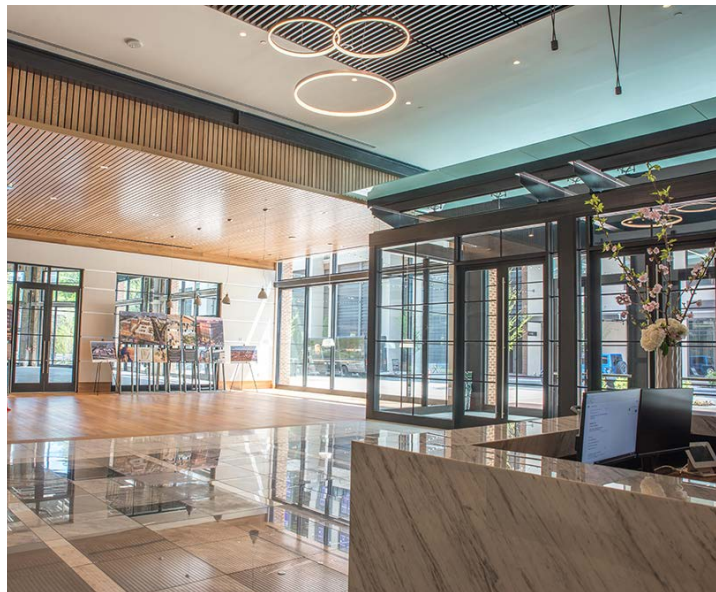
- Shower and locker facility
- Bike racks
- 4th floor terrace
- Pocket park
- Building conference room





# A NEW OUTLOOK ON OFFICE SPACE

FOR AVAILABILITIES, VISIT OUR WEBSITE AT [CAPITOLVIEWNASHVILLE.COM](http://CAPITOLVIEWNASHVILLE.COM).



VIEW FROM 4TH FLOOR OFFICE TERRACE



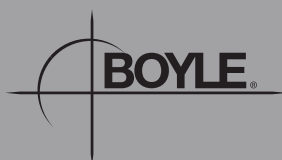


## URBAN ACTIVITY PARK



Urban activity park connected to the Nashville Greenway trail.

Shopping, dining, and fitness options right outside your office.



**BOYLE INVESTMENT COMPANY**  
2000 MERIDIAN BOULEVARD, STE 250  
FRANKLIN, TENNESSEE 37067

**Thomas McDaniel**  
tmcdaniel@boyle.com

**615-550-5575**

[www.CapitolViewNashville.com](http://www.CapitolViewNashville.com)



No warranty or representation, express or implied is made as to the accuracy of the information contained herein, and the same is submitted subject to errors, omissions, changes or price, rental or other conditions, withdrawal without notice, and to any special listing conditions, imposed by our principals. All potential leases are contingent upon prior commitment of space, a prospect's financial information and execution of a mutually satisfactory lease document.